

PAST TIMES

JANUARY 2022

CHIPPENHAM & DISTRICT METAL DETECTING CLUB (CDMDC)



CLUB NEWS

Firstly may I start by wishing everyone a Happy New Year, lets hope it brings some amazing finds! After a year off due to Covid, this years CDMDC Christmas meal took place on Saturday 4th December and was hosted once again at the Bell Inn at Yatton Keynell. A good mixture of club members and family from T1, T2 and the IDS members all attended. It was great to see everyone who attended enjoy themselves and socialize as best as possible considering the ongoing pandemic. After the meals were devoured, Bev drew the Christmas raffle and then hosted a general knowledge quiz which was won by T2 member Tim. Thanks to all who attended and a massive Thankyou to Bev for successfully arranging the night.

TIER 1

CLUB FINDS OF THE MONTH

TIER 2

BEST COINS



JON SILVER CELTIC DOBUNNI UNIT

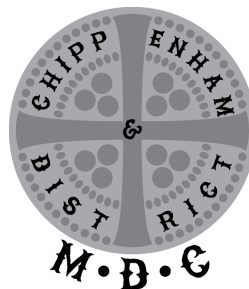
TERRY CHARLES 1ST SIXPENCE

BEST ARTIFACTS



LORRAINE SILVER ITEM

TERRY ROMAN TRUMPET BROOCH



WINNER: MIMZY

RUNNER UP: MATT



ELIZABETH I HALF GROAT

CHARLES I PENNY

BEST ARTEFACT

WINNER: MATT

RUNNER UP: MIMZY



FOB-SEAL MATRIX



MEDIEVAL BUCKLE

PILGRIMS AMPULLA



During the twelfth through fourteenth centuries, pilgrims were likely to purchase an ampulla, a type of container filled with holy water or oil. These could be purchased outside the shrines of a revered saint. In doing so, they hoped that some degree of the saint's sanctity would be imparted to them. Ampullae were usually small flat lead vials filled with holy liquid which were worn around the neck. It is believed ampullae may have been used in annual springtime "blessing of the fields" ceremonies by being carried to fields and buried, or having their contents spread across the fields to bring prayers and good luck for the upcoming harvest.

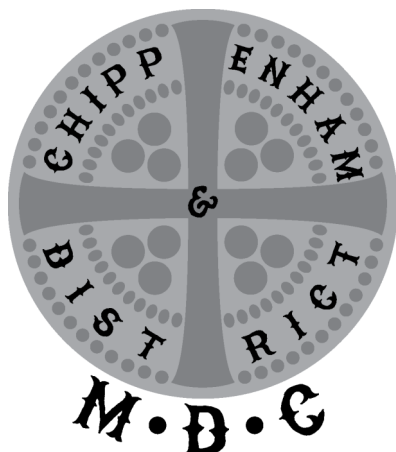
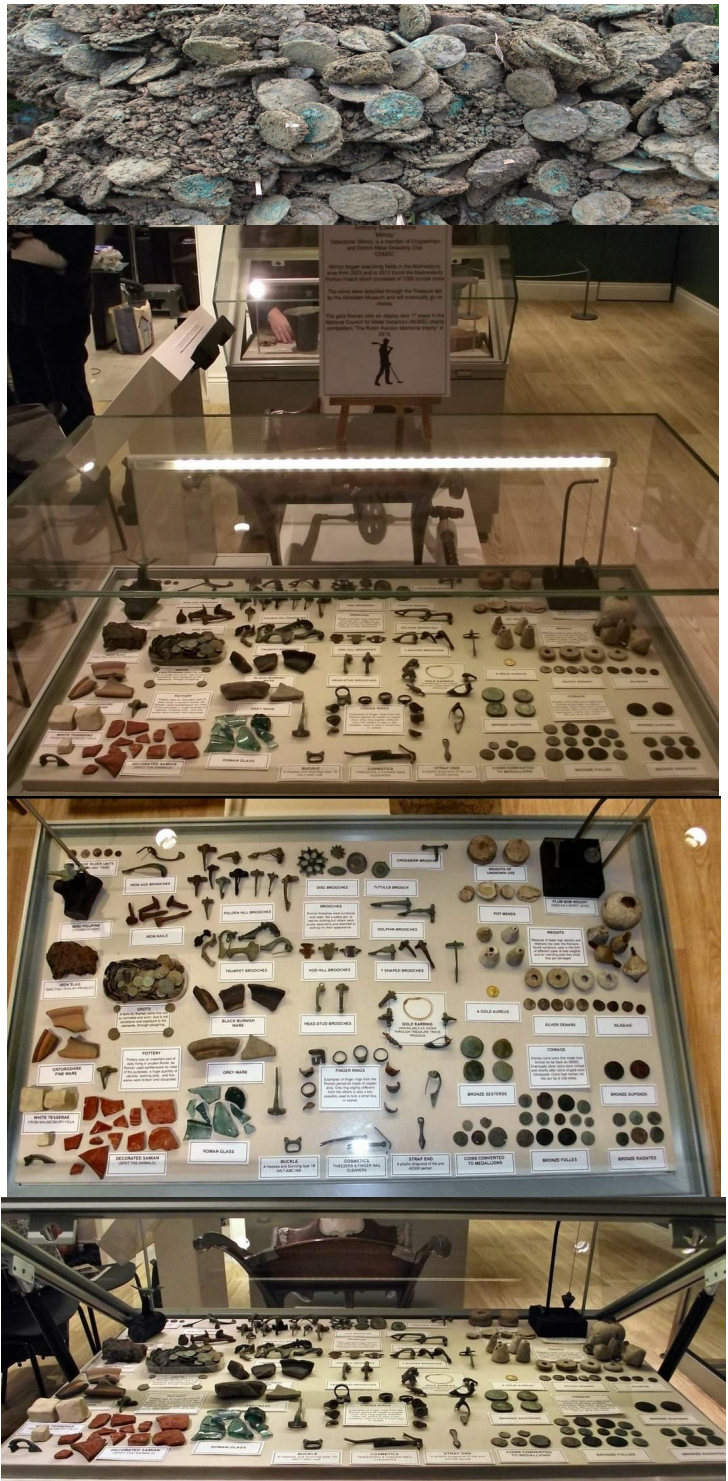
Ampullae, the plural form of ampulla in Latin, are often found in England and Wales. The range of designs they feature and the multitude of locations at which they have been discovered suggest that there were several places where they were manufactured. They were typically made from metals like lead and lead-tin alloy, since these materials were pliable and not of a particularly high quality. In other words, the "low melting point" at which these metals broke down rendered them easy to work with. Many ampullae used the pre-eminent pilgrimage symbol of the scallop shell, other designs can have religious symbols, flowers or just a simple blank design.

CLUB MEMBERS MUSEUM DISPLAY

Back in 2012 CDMDC club member Anthony Mims also known as Mimzy (with a Z) was detecting in a field in Milbourne, Malmesbury when he stumbled upon a hoard of 1266 roman coins! After 9 gruelling years of conservation by the volunteers of the Athelstan museum in Malmesbury, the hoard of coins is finally almost ready for display! In preparation for the hoard being displayed, Mimzy has contributed hours of his time setting up a display of his finds for the museums latest Roman display. The museums display organizer had these words to say about Mimzy's Roman display "Its for the Heritage funded project, this is the last of 3 temporary exhibits, and in my view the best one! It is to promote the coming of the Malmesbury coin hoard, and to bring the Romans out of the cold. Its to show and explain that the Romans were here and they had influence in our area. It is also to help give background to the hoard as we get ready to have it finally displayed in the Athelstan Malmesbury Museum".

Why not head over to the museum and check out Mimzy's display, or check out the museums website: <https://www.athelstanmuseum.org.uk/>

For more information about Mimzy's Roman coin hoard check out this link: <https://malmesburycoinhoard.uk/>



CLUB CONTACT DETAILS

Chairman T1	Terry Kearton
Chairman T2	Matthew Fenn
Treasurer	Peter Amer
Secretary	Lorraine Stanley

WEBSITE:

<https://>

www.chippenhamanddistrictmdc.co.uk/